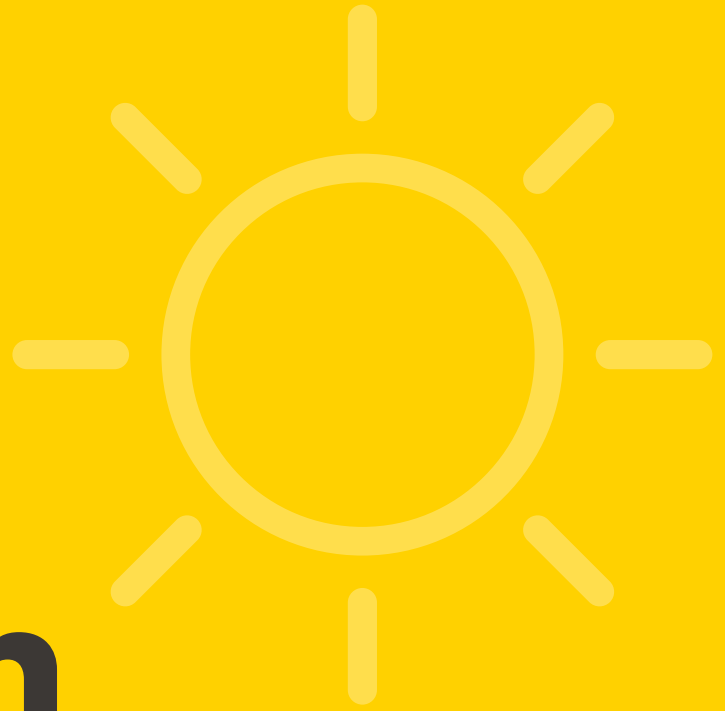




Solar Feed-In Tariff Rates



SOUTH AUSTRALIA

The following are DC Power Co's feed-in tariff (FiT) credit rates for South Australia.

These are payable in accordance with our [solar terms and conditions](#) for South Australia and subject to change in accordance with clauses 3.3 and 5.2 of those conditions.



15 c/kWh of metered net export generation (FiT)

If you qualify for the Initial SA Feed-in Scheme, your rate is 59 c/kWh of metered net export generation.

If you qualify for the 45kWh SA Feed-in Scheme, your rate is 59 c/kWh of metered net export generation (up to the first 45 kWh of metered net export generation per day, on average across your billing cycle).

Issue date: 14 February 2020